

SAE FD&E Meeting

October 19-20, 1999

Road Load Data Acquisition Division

Approval of Minutes

- 1) Life Bounding for Durability Duty Cycles,
Mark Przeslawski, nCode International
- 2) Proving Ground Comparison & Other Thoughts,
Andrew Whelan, Tower Automotive
- 3) www.fatigue.org, Status and Direction, a **Discussion**
Christoph Leser, MTS Systems Corporation

Update on Website Activities

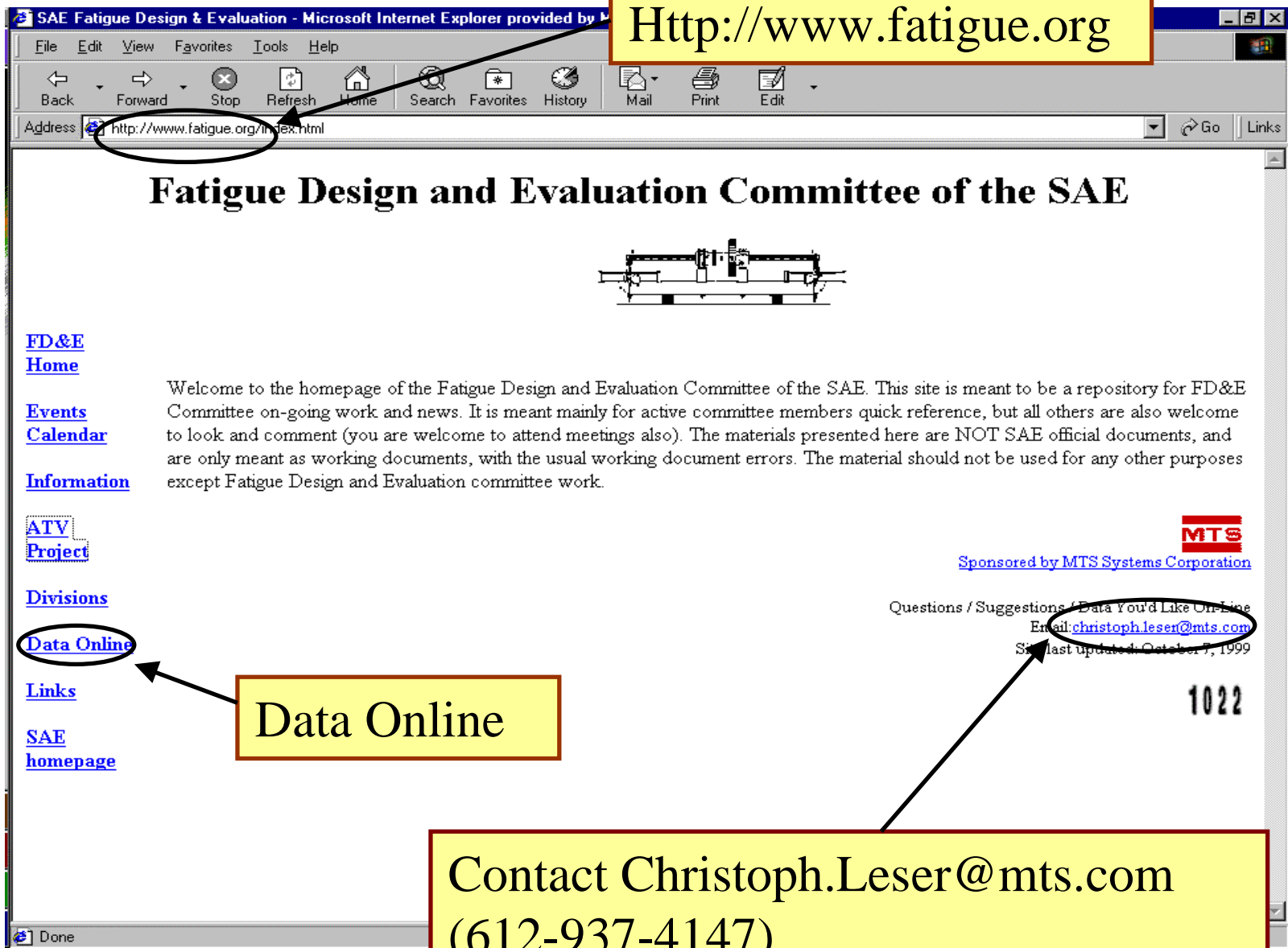
www.fatigue.org

October 18-20, 1999

Christoph Leser

(612) 937 4147

christoph.leser@mts.com



Http://www.fatigue.org

Fatigue Design and Evaluation Committee of the SAE



- [FD&E Home](#)
- [Events Calendar](#)
- [Information](#)
- [ATV Project](#)
- [Divisions](#)
- [Data Online](#)
- [Links](#)
- [SAE homepage](#)

Welcome to the homepage of the Fatigue Design and Evaluation Committee of the SAE. This site is meant to be a repository for FD&E Committee on-going work and news. It is meant mainly for active committee members quick reference, but all others are also welcome to look and comment (you are welcome to attend meetings also). The materials presented here are NOT SAE official documents, and are only meant as working documents, with the usual working document errors. The material should not be used for any other purposes except Fatigue Design and Evaluation committee work.


Sponsored by MTS Systems Corporation

Questions / Suggestions / Data You'd Like On-Line
Email: christoph.leser@mts.com
Site last updated: October 7, 1999

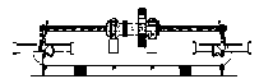
1022

Data Online

Contact Christoph.Leser@mts.com
(612-937-4147)



Fatigue Design and Evaluation Committee of the SAE



[FD&E Home](#)

[Events Calendar](#)

[Information](#)

[ATV Project](#)

[Divisions](#)

[Data Online](#)

[Links](#)

[SAE homepage](#)

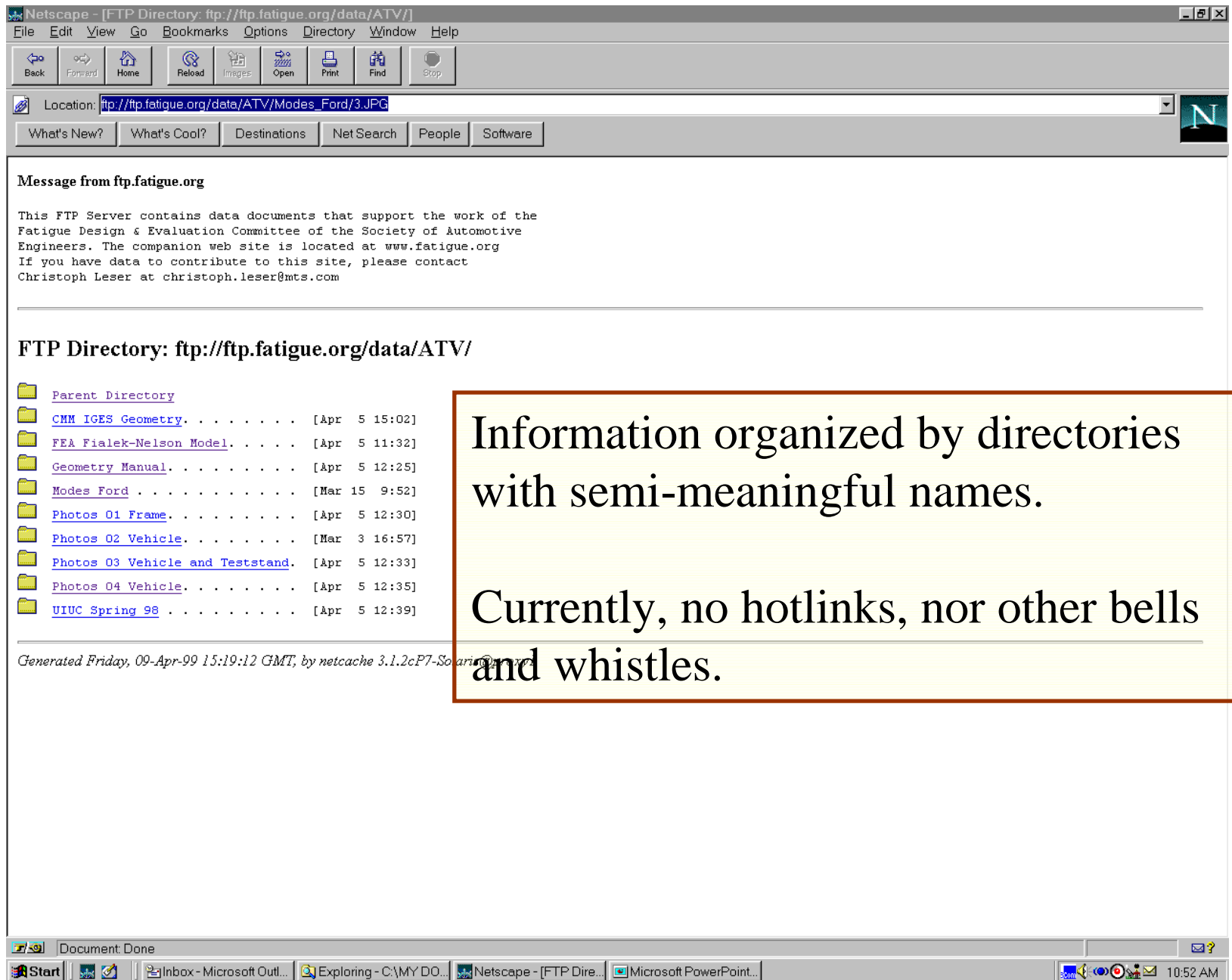
The following files are located at <ftp://ftp.fatigue.org/>
To post additional data please see the [readme.txt](#) file at <ftp://ftp.fatigue.org/>
Please note that no SAE copyrighted information may be posted on this site.

- [Uniaxial Data](#)
- [Multiaxial Data](#)
- [MN-Multiaxial Data](#)
- [Notch Data](#)
- [Weld Data](#)
- [Composite](#)
- [ATV](#)



ATV





Message from ftp.fatigue.org

This FTP Server contains data documents that support the work of the Fatigue Design & Evaluation Committee of the Society of Automotive Engineers. The companion web site is located at www.fatigue.org. If you have data to contribute to this site, please contact Christoph Leser at christoph.leser@mts.com

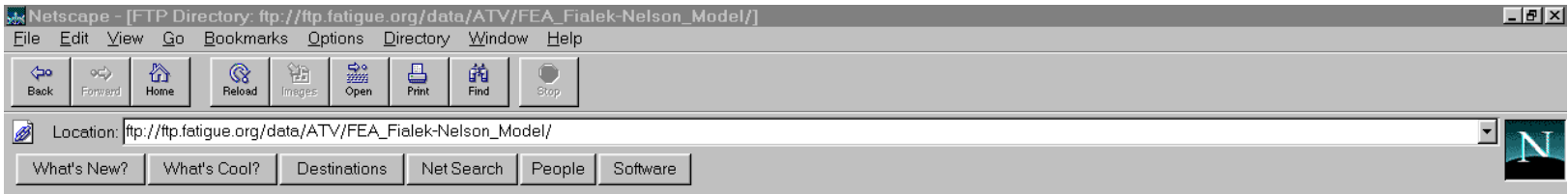
FTP Directory: ftp://ftp.fatigue.org/data/ATV/

- Parent Directory
- CHM IGES Geometry. [Apr 5 15:02]
- FEA Fialek-Nelson Model. [Apr 5 11:32]
- Geometry Manual. [Apr 5 12:25]
- Modes Ford [Mar 15 9:52]
- Photos 01 Frame. [Apr 5 12:30]
- Photos 02 Vehicle. [Mar 3 16:57]
- Photos 03 Vehicle and Teststand. [Apr 5 12:33]
- Photos 04 Vehicle. [Apr 5 12:35]
- UIUC Spring 98 [Apr 5 12:39]

Generated Friday, 09-Apr-99 15:19:12 GMT, by netcache 3.1.2cP7-Soaring@xxxx

Information organized by directories with semi-meaningful names.

Currently, no hotlinks, nor other bells and whistles.



Message from ftp.fatigue.org

This FTP Server contains data documents that support the work of the Fatigue Design & Evaluation Committee of the Society of Automotive Engineers. The companion web site is located at www.fatigue.org

FTP Directory: ftp://ftp.fatigue.org/data/ATV/FEA_Fialek-Nelson_Model/

Parent Directory			
atv.abaqus.atv.inp.1006.gz	[Mar 30 8:02]	2781K	
atv.abaqus.hm.912.gz	[Mar 30 8:03]	5653K	
atv.abaqus.iges.1006.gz	[Mar 30 8:03]	2265K	
atv.abaqus.iges.912.gz	[Mar 30 8:04]	2222K	
atv.abaqus.patran.out.1006.gz	[Mar 30 8:04]	969K	
atv.abaqus.patran.out.912.gz	[Mar 30 8:04]	891K	
atv.ansys.hm.912.gz	[Mar 30 8:05]	5645K	
atv.db.bak.gz	[Mar 30 8:06]	5774K	
atv.db.gz	[Mar 30 8:07]	5542K	
atv.db.jou.gz	[Mar 30 8:07]	41K	
IGES export.msg.01	[Mar 30 7:56]	2K	
IGES import.msg.01	[Mar 30 7:56]	6K	
gish_01.gz	[Mar 30 8:08]	4403K	
README.doc	[Mar 30 7:55]	27K	
Sac...gif	[Mar 30 7:55]	72K	

Generated Friday, 09-Apr-99 14:48:56 GMT, by netcache 3.1.2cP7-Solaris@proxyl

each directory has a README.doc

Documents are typically Microsoft Word, Excel, and Outlook

Scanned images are .tif

Photographs are .jpg and Microsoft PowerPoint

Most things are winzipped or gzipped (except README)



Current Website Situation

- <200 Mbytes used for ALL data and web layout
- 2 Gbyte commitment
- Maintenance requirements are no problem
- No open items at this time to make site more user friendly, suggestions?
- Submissions can be made via email or ftp

On Website

- Data
- Minutes
- Meeting announcements
- Links, etc.

Continuously updated

Issues

- Data formats (zip, etc.)
- Data organization
 - OEM Format
 - Other SAE committees

One members proposal:

One set of data only

Report Per directory

Test/measurement data:

- 1. Suspension including mounts**
 - A. System B. Components**
- 2. Frame/body**
 - A. System B. Components**
- 3. Powertrain**
 - A. System B. Components**
- 4. ATV system (loads, vehicle modes etc.)**
- 5. Gage/Mass/weight information**
 - A. Systems B. Components**

Analysis data:

- 1. Suspension including mounts**
 - A. System B. Components**
- 2. Frame/body**
 - A. System B. Components**
- 3. Powertrain**
 - A. System B. Components**
- 4. ATV system (MBD, vehicle modes etc.)**
- 5. Gage/Mass/weight/geometry information**
 - A. Systems B. Components**

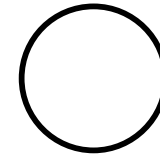
Data



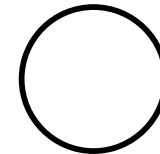
Information



Knowledge



Progress



Future of Web Site

- How useful is this?
- What is missing?
- Can this be organized better?
- Volunteers to turn data into information?